

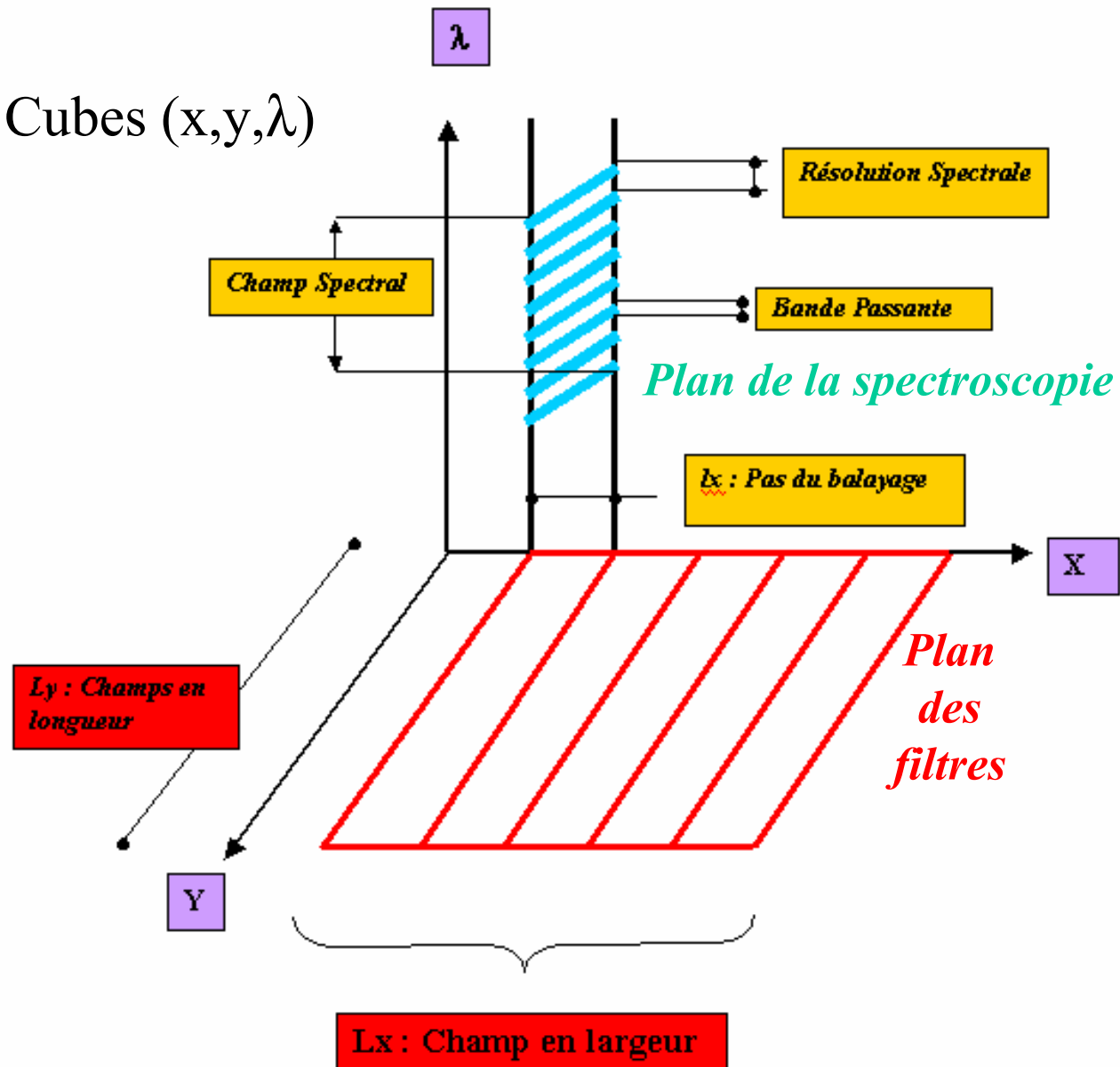
J. Moity, Th. Roudier, J.-M. Malherbe, P. Mein, S. Rondi

Dynamique des éléments magnétiques de la Photosphère Calme

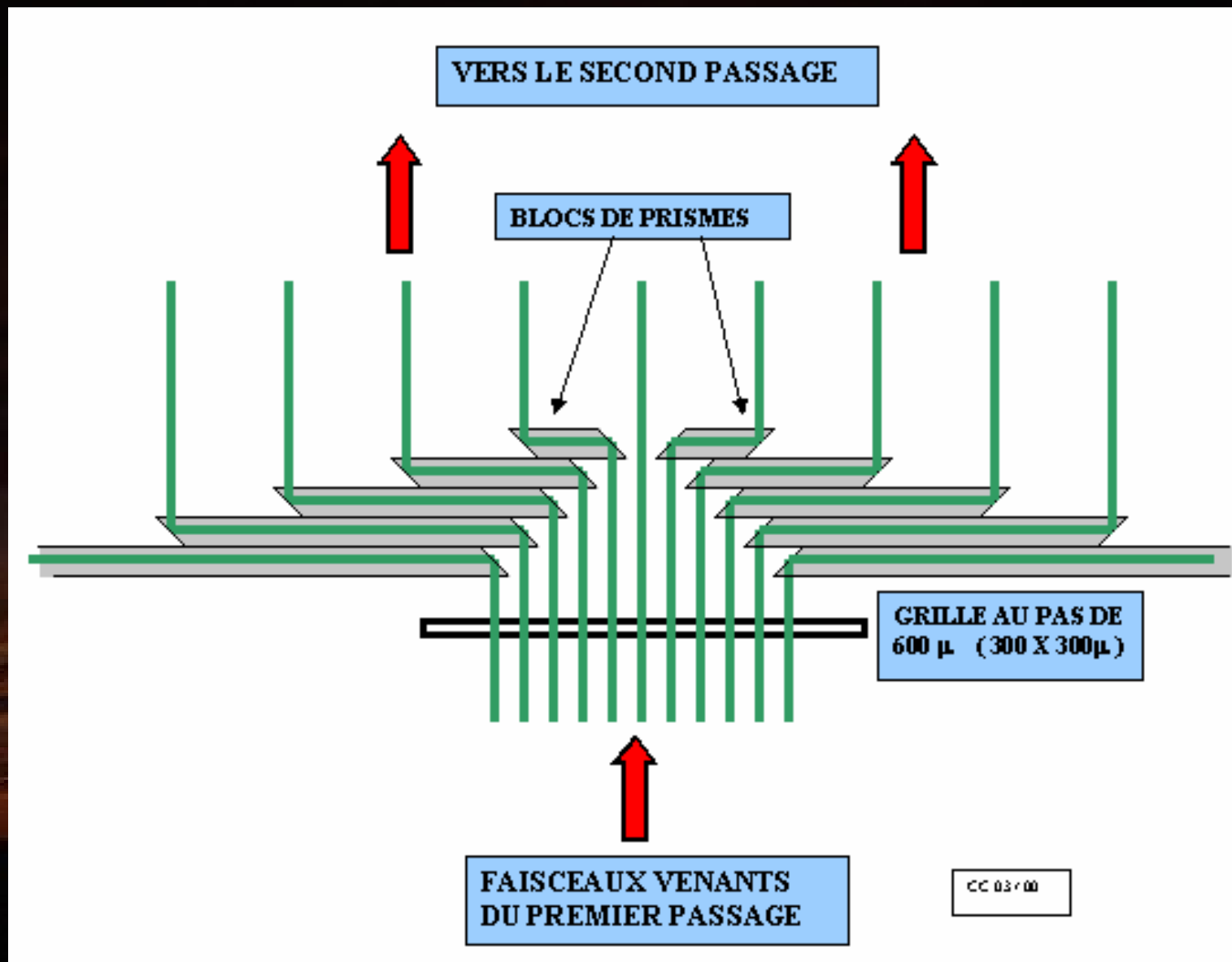


DPSM: les « cubes de données (x,y, λ) »

Cubes (x,y, λ)

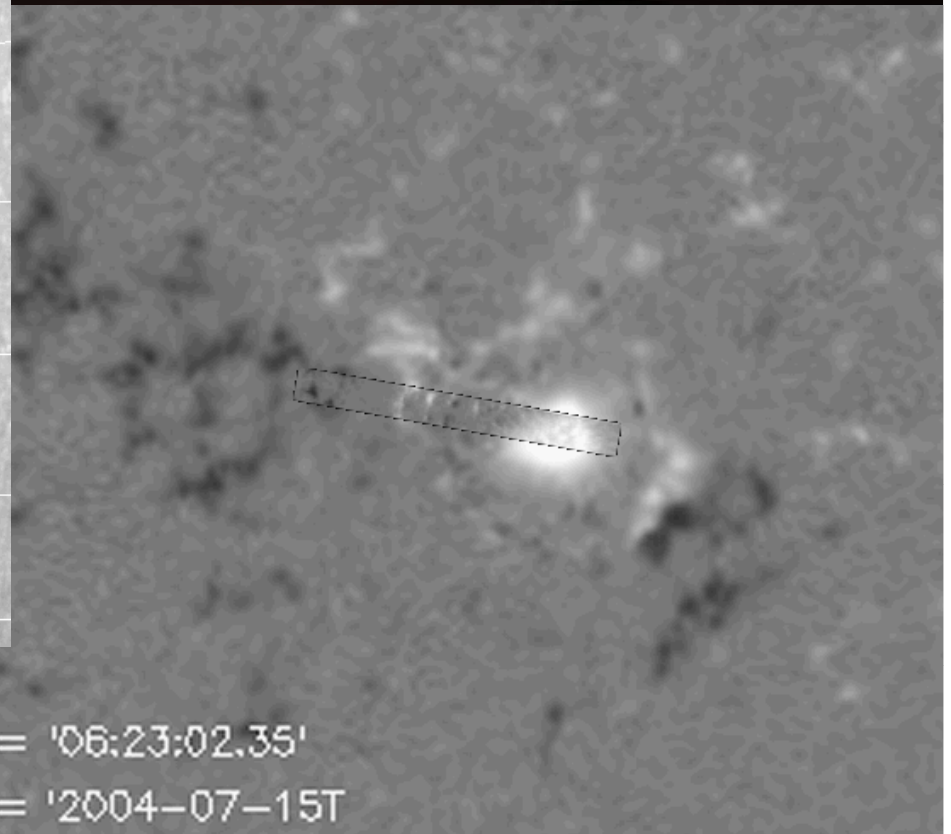
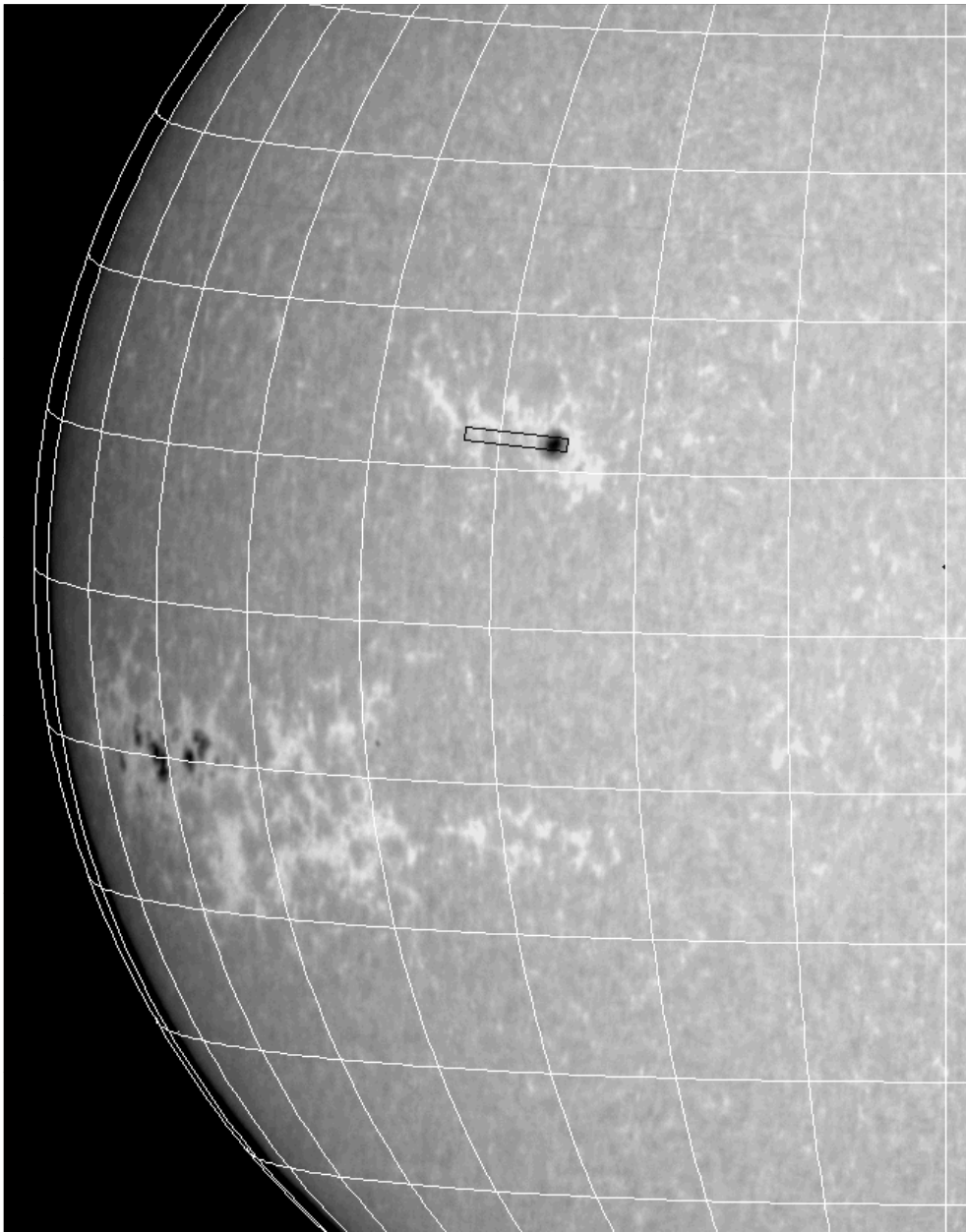


Boîte 11 canaux résolution 120 mA



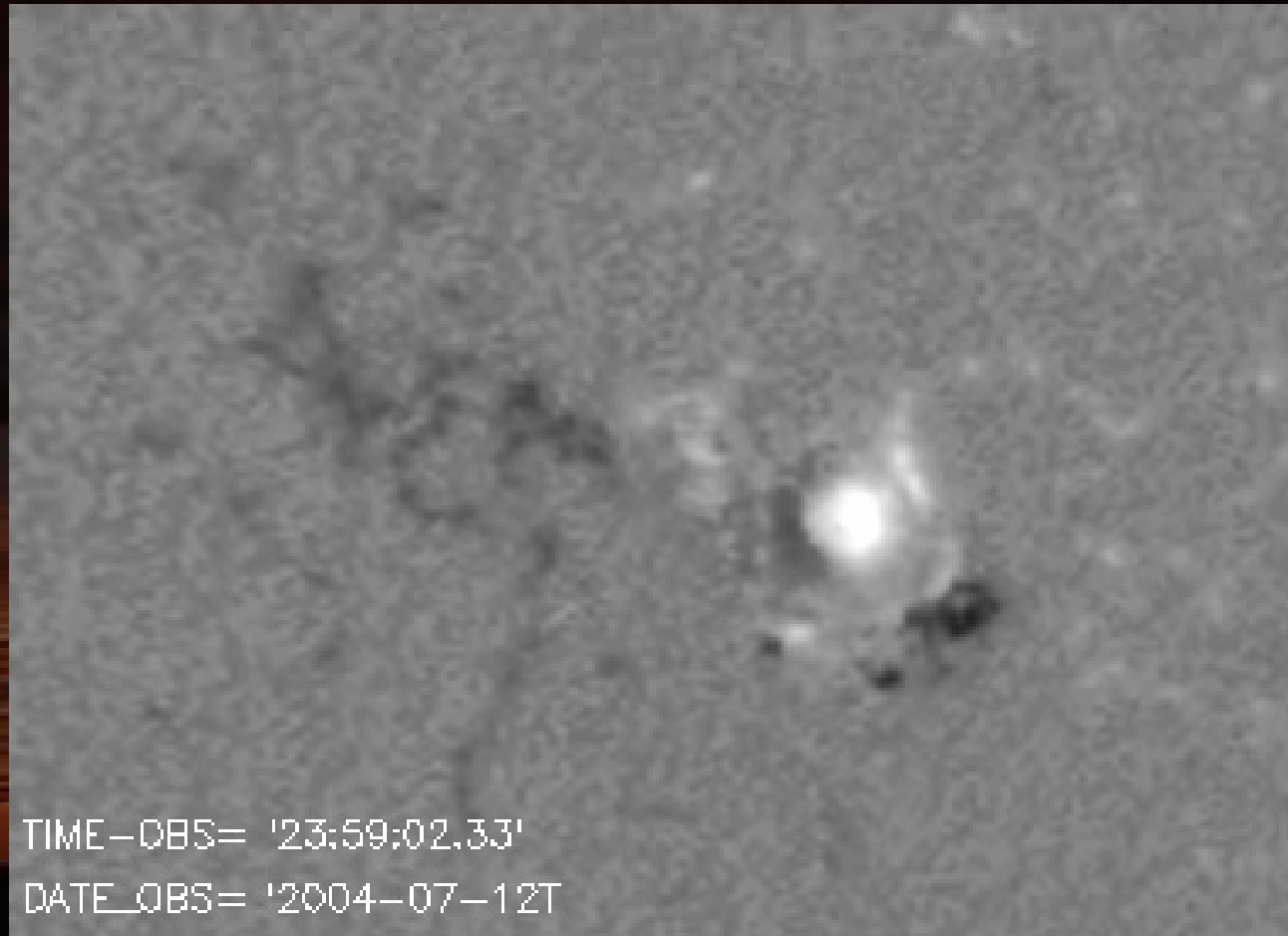
**CONTEXTE CaII
K1v (Meudon)**

**CONTEXTE
MDI/SOHO B//**



TIME_OBS= '06:23:02.35'
DATE_OBS= '2004-07-15T'

Evolution des champs magnétiques B_{\parallel} de la région vue par MDI/SOHO pendant 6 jours



DPSM NaD1 15 Juillet 2004

43 mn d'observations, pas de 1 mn

Rafales de 30 couples I+V, I-V, Flat Field, Field Stop

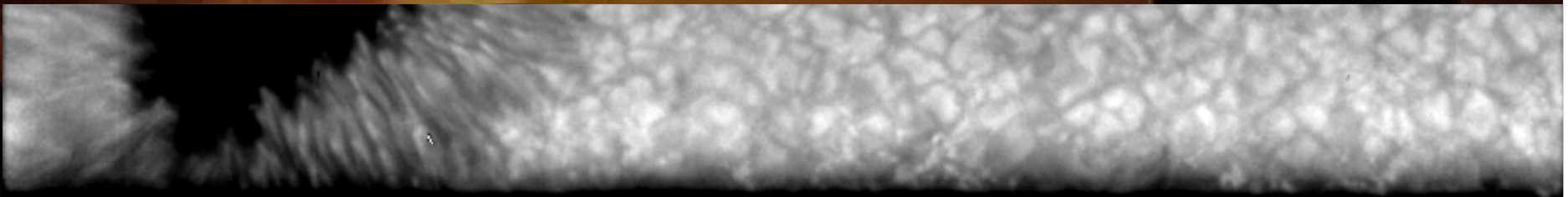
Pixel de 0.13'', champ de 13'' x 120''

Boîte DPSM 11 canaux résolution spectrale 120 mÅ

Visualisation du canal 11 (pseudo continu) pendant 10 mn



Exploration en altitude (continu, centre raie)

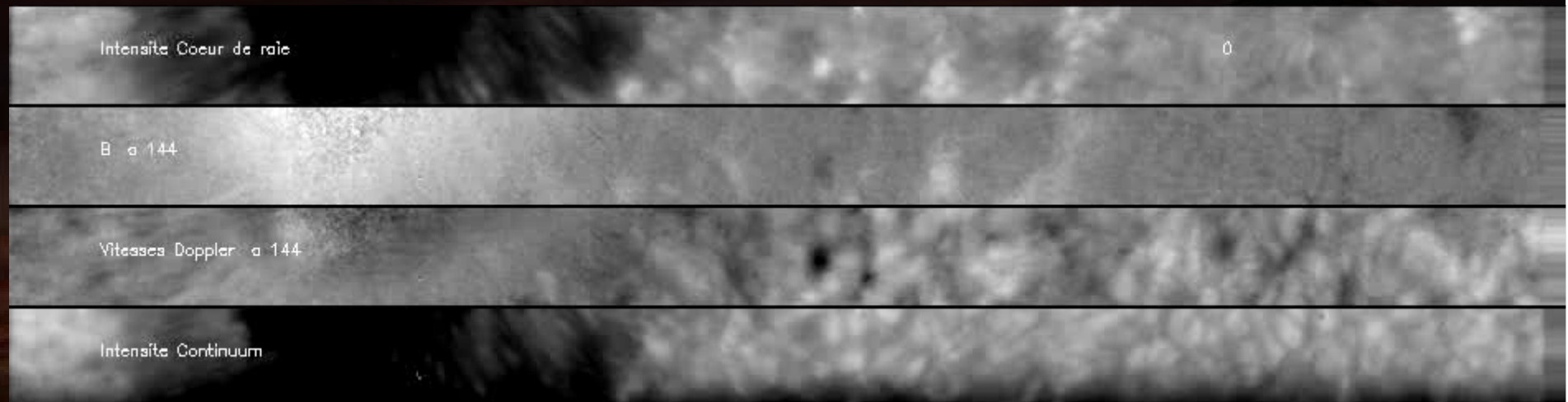


DPSM NaD1 15 Juillet 2004

Rafales de 30 couples I+V, I-V, Flat Field, Field Stop

Pixel de 0.13'', champ de 13'' x 120''

Boîte DPSM 11 canaux résolution spectrale 120 mÅ



Intensité, B// et V// à 144 mÅ

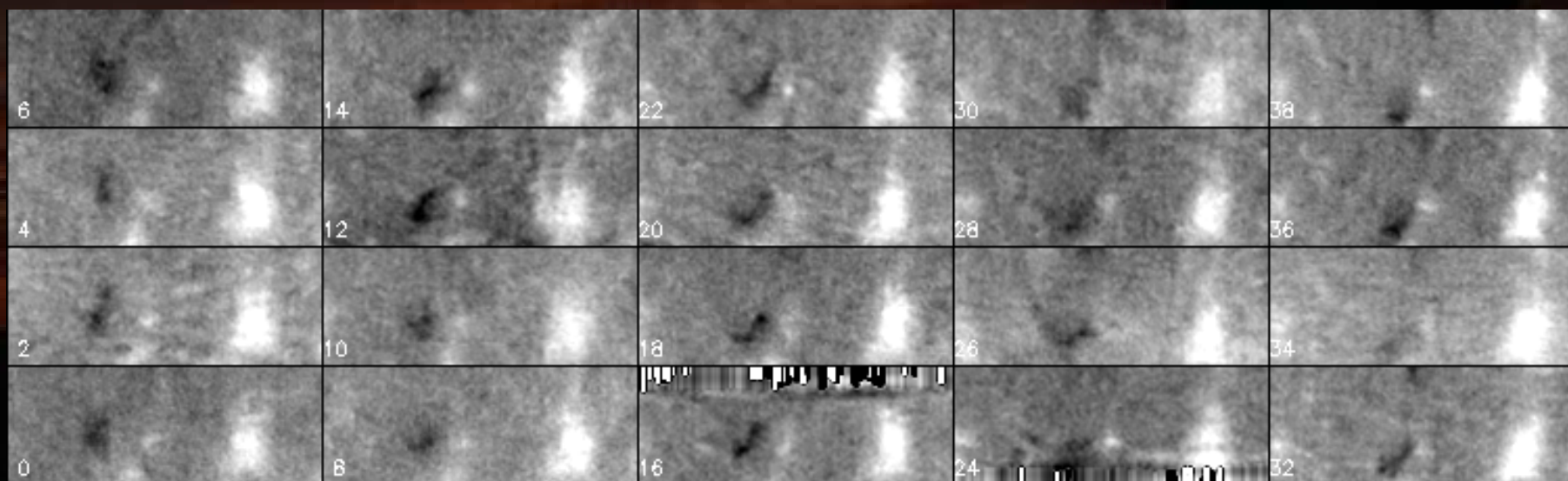
+ Intensité du continu, pendant 43 mn, pas de 1 mn

Effet de l'accumulation après recentrage et « destretching » de plusieurs couples I+V, I-V dans une même rafale

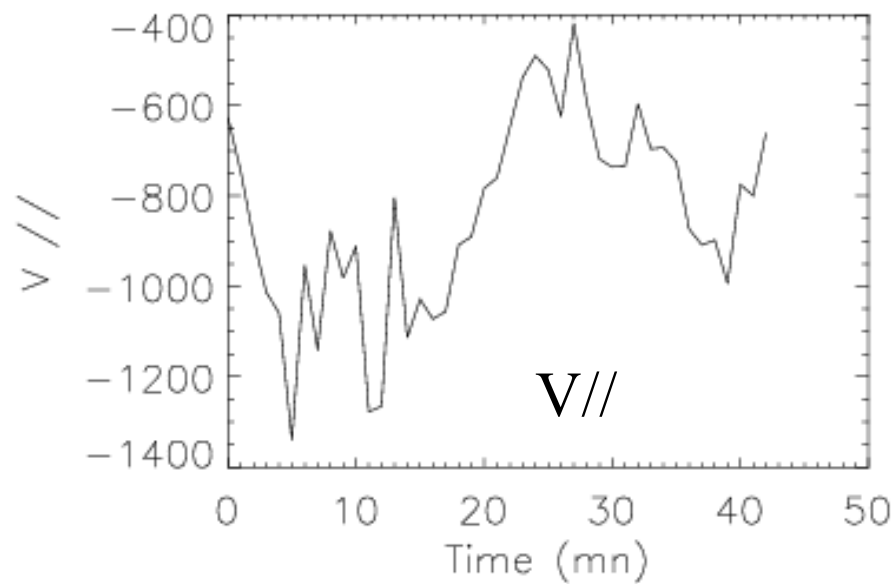
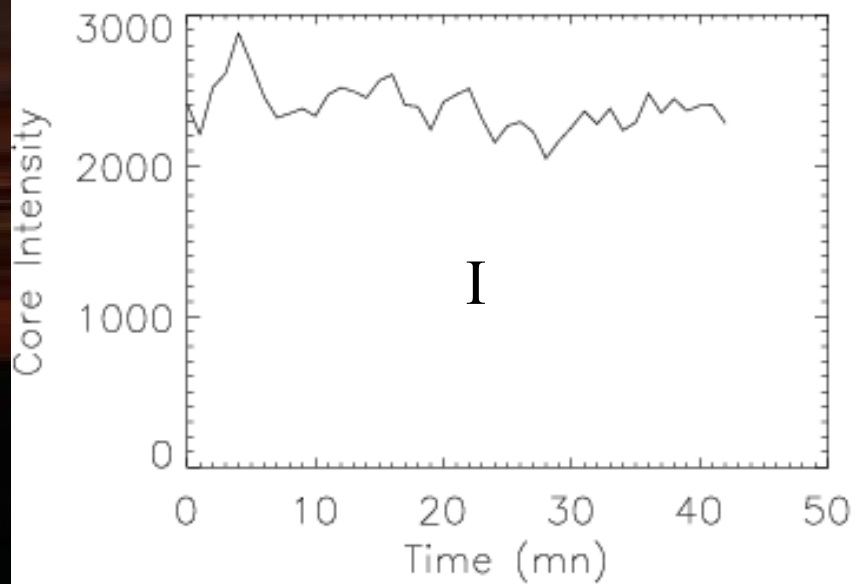
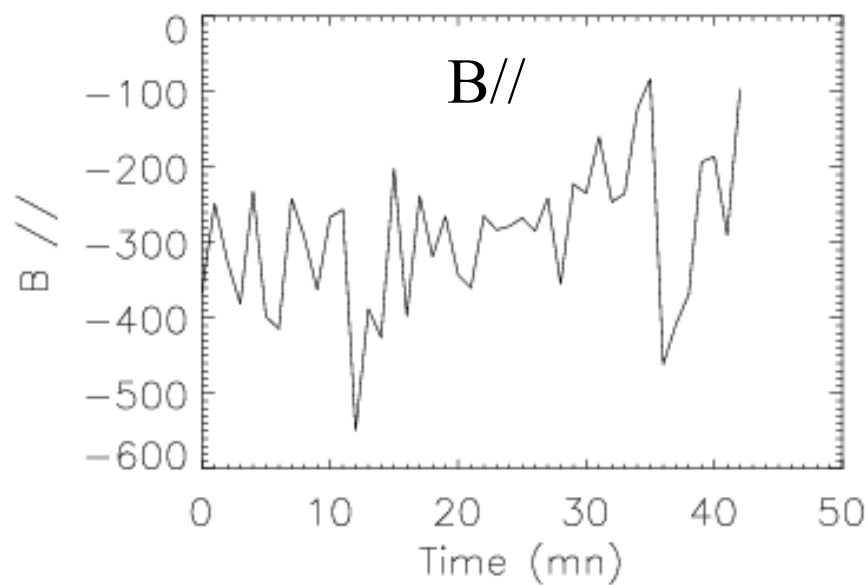
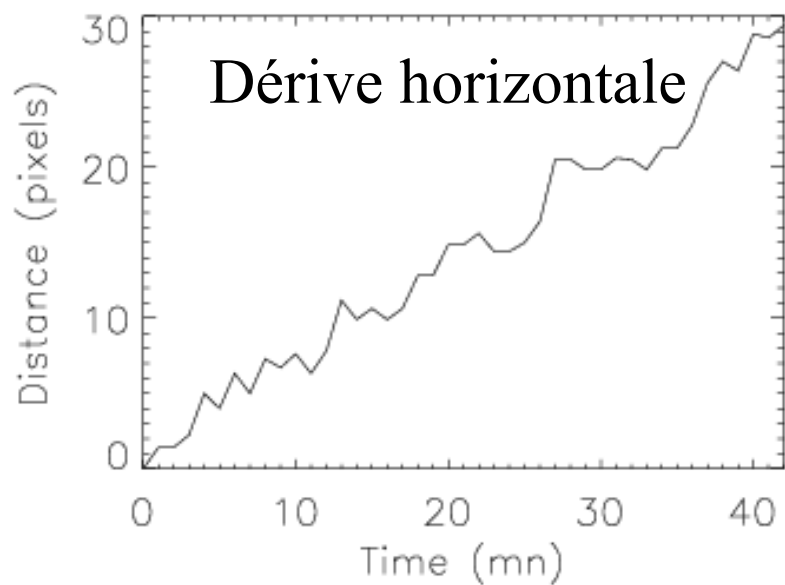
10 couples

1 couple

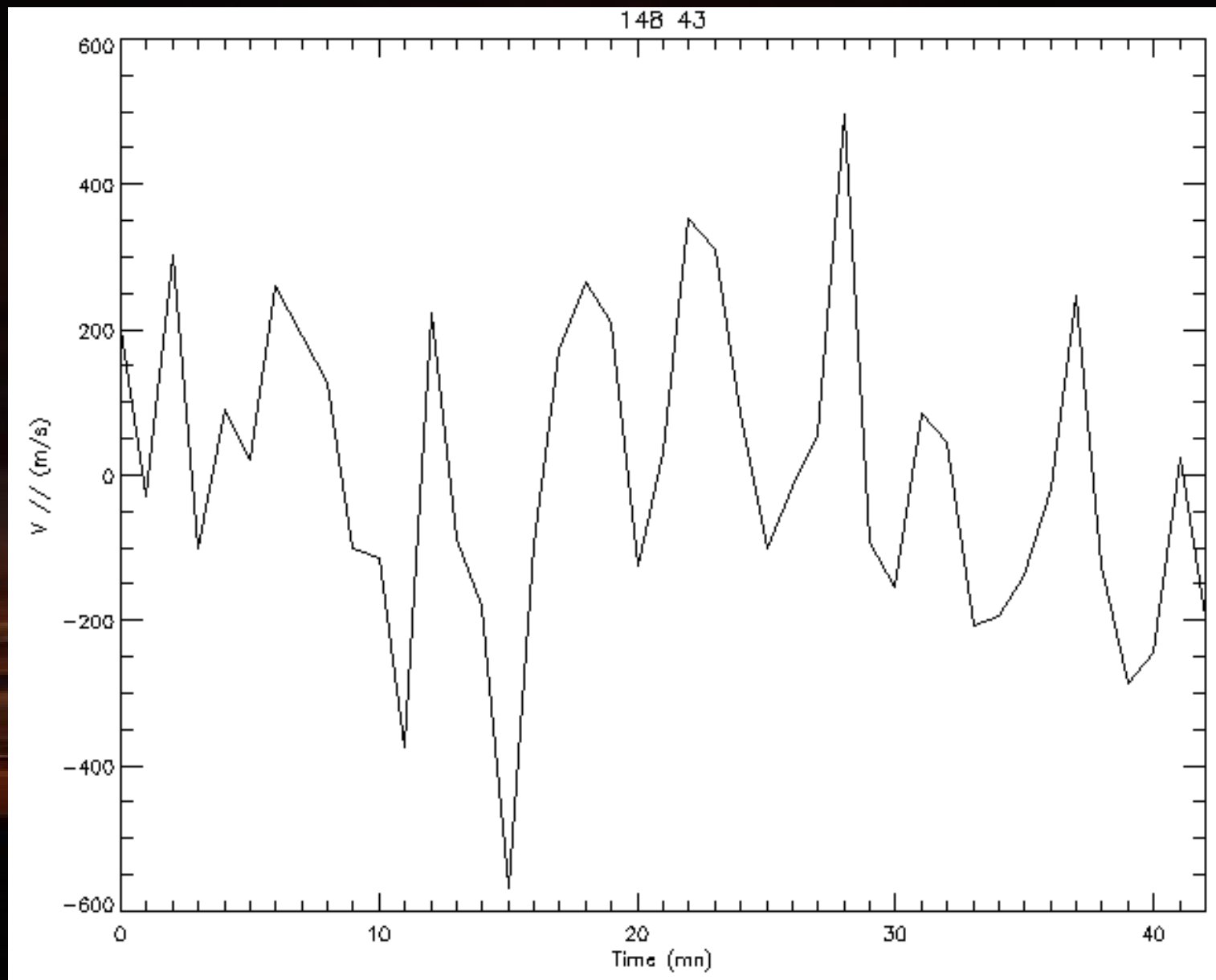
MMF Moving Magnetic Features



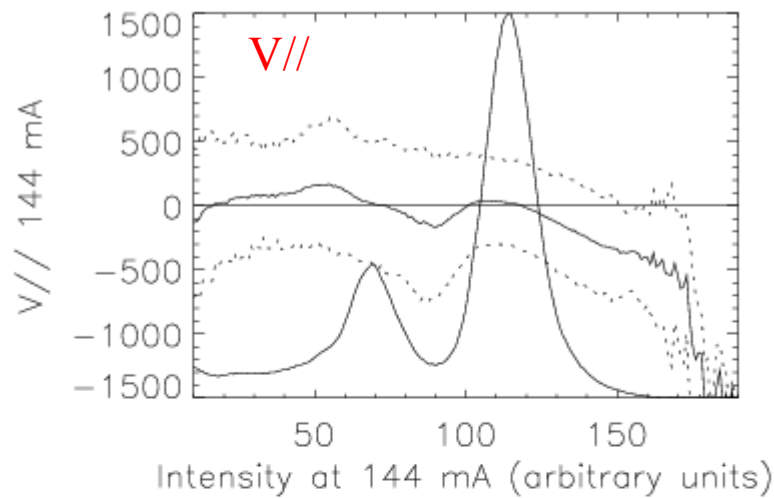
MMF Moving Magnetic Features



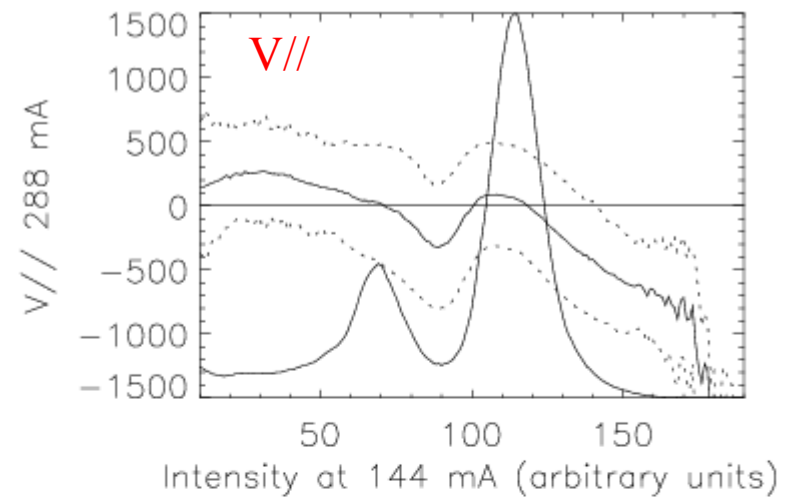
Oscillations des vitesses dans la pénombre de la tache



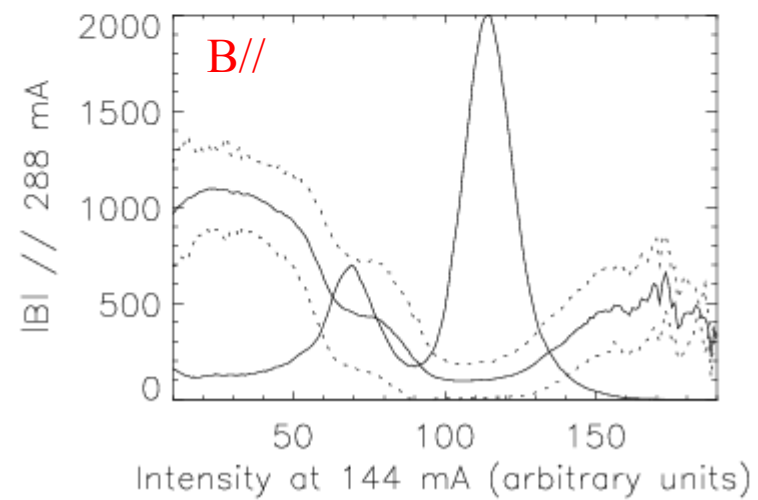
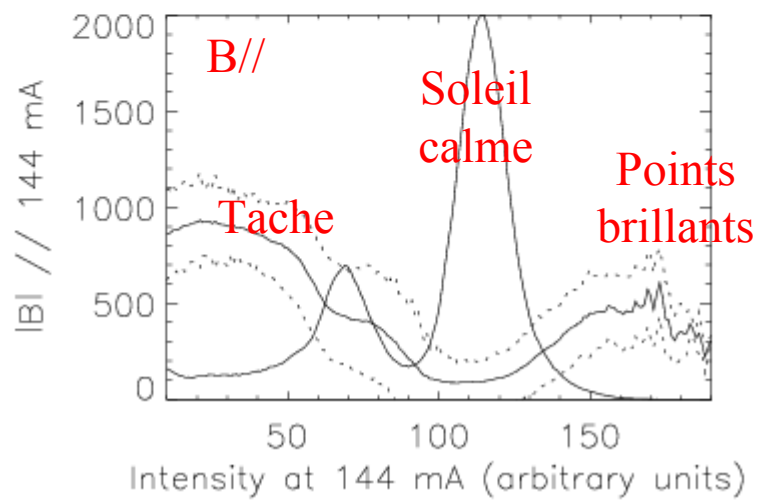
Etude statistique sur le champ en fonction de l'intensité



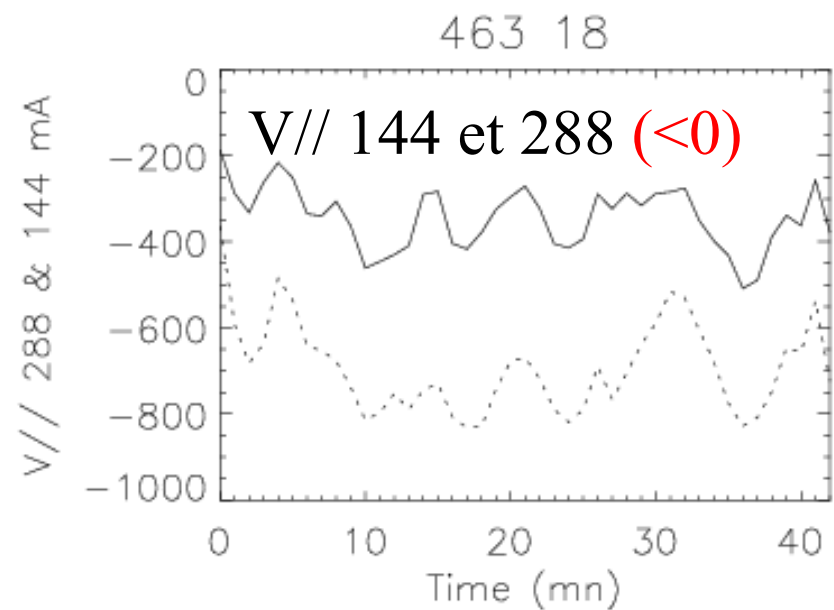
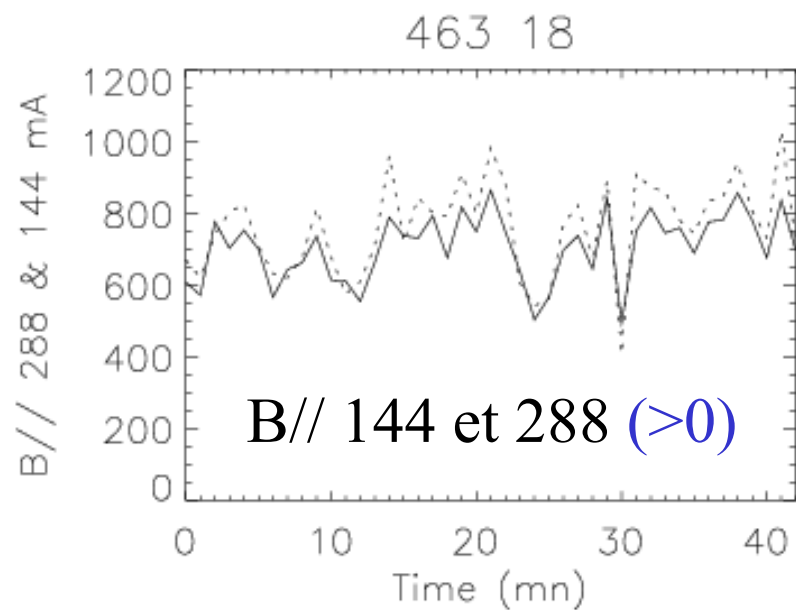
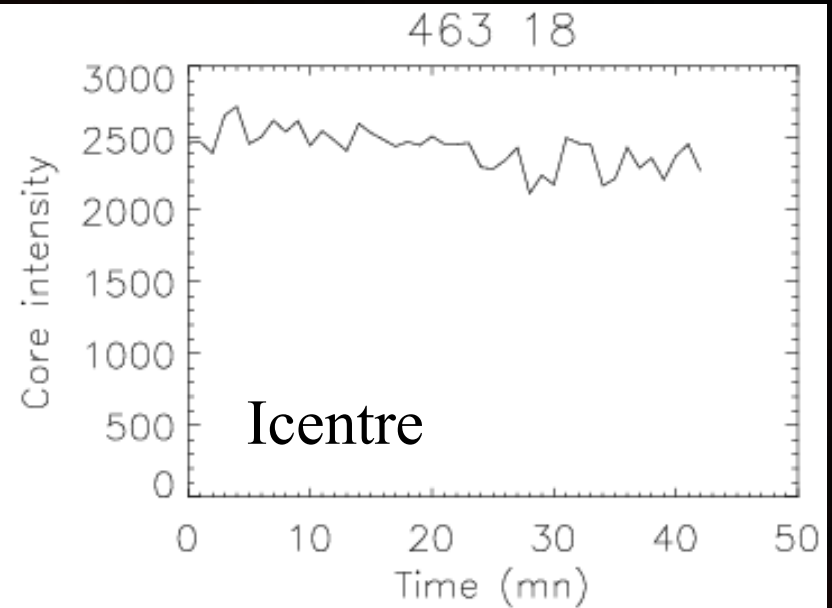
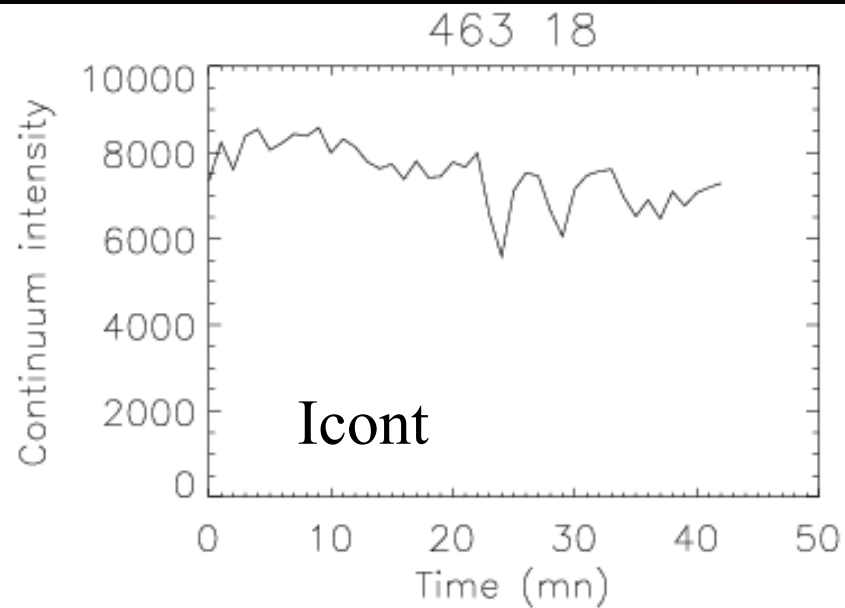
altitude h



altitude h - 160 km



Evolution d'un point brillant (n° 1)



Evolution d'un point brillant (n° 2)

